

DCMOTO[®]
www.dcmoto.my

Brand New
GFM975

Our 5th Generation
Autogate Driver Motor



<https://www.dcmoto.my/>

Quick Plug & Play
Installation

Easy Interchangeable
AC / Solar Power

Additional Security
Technology

Simplified Future
Maintenance

Smoother Motion with
SoftGlide™ Technology

More Efficient Installation

New All-In-One Smart Motor

Unlocking a 'Plug-and-Play' setup for installers

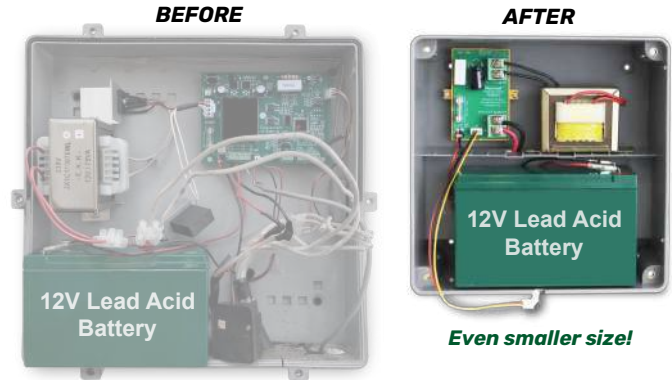
The unit features a built-in control board, electric lock, motor, and planetary gears. Plug-and-play connectors ensure correct connections and reduce installation errors.



Simpler & Cleaner Power Box

Enjoy quick-&-easy installation and maintenance

The redesigned Power Box is an uninterruptible power supply for your motor units. It offers key functions with significantly reduced wiring, resulting in a cleaner and safer system.



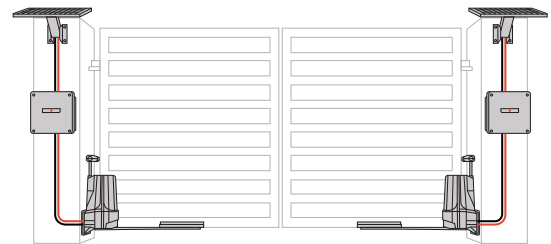
Customisable Power Configuration, Adapts to Home Autogate Setup

Our system supports multiple power configurations and is easily customisable to suit specific customer requirements.



AC Powering Method

The common installation method uses concealed AC wiring, requiring wall hacking and underground cables.



SOLAR Powering Method

Simplify installation with solar panels on each side, eliminating underground wiring and wall hacking.

In the event of future wire degradation, our system allows for an easy switch to an alternative configuration without the need for laying new underground cables.

Worry-Free User Experience & After Sales

Status Indicators Monitor & Troubleshoot Easily

Use LED indicators to monitor the system's status. When necessary, relay the status to support personnel for easy troubleshooting.



SoftGlide™ Motion Buttery Smooth Gate Movement

The GFM975 motor system provides smoother motion, reducing jerks and extends the autogate's lifespan.



Rotary Driver Efficient & Reliable

To enhance durability in swing and folding gates, our motor system uses a high-torque, efficient planetary gearbox.



Key Features



AntiSpy-II Remote Control

The latest AntiSpy-II remote control features many enhancements over the previous AntiSpy Remote Control, notably including improved encrypted rolling code technology, panic alarm and addition of cloning lock.

The AntiSpy-II remote can be distinguished by its red operating LED color.



AntiSpy-II

Improved encrypted rolling code technology prevents replay attacks from unauthorized adversaries.



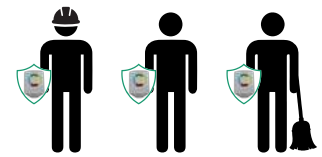
Panic Alarm

Users can activate the alarm to alert others and seek help in case of an emergency.



Cloning Lock

No more worries about unauthorized remote control cloning by untrusted visitors or service personnel.



Backup Battery

Our motor system's backup battery ensures up to 14 days or 1500 uses on a full charge.



Manual Key Override

In unforeseen circumstances, users can use the manual override key to bypass the motor's electric lock.



Motion Alert

When enabled, the motor system will produce a distinctive motion alert sound to notify surrounding people when the autogate is in operation.



Overload Protection

The GFM975 has in-built overload protection. When an abnormal force is detected, the autogate will stop automatically to prevent further damage.



Enhance Gate Safety with Infrared Safety Beams*

No extra wiring is required to upgrade

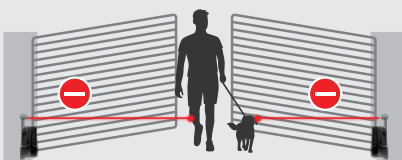
The add-on feature of a infrared dual beam sensor provides an extra layer of safety for families with children and pets.

*Product sold separately



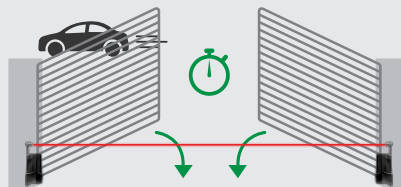
Obstacle Detection

Infrared beams prevent accidental closures and pinching. If an obstacle is detected, the gate reverses and emits a warning tone. Users can override it.



Auto-Close Timer

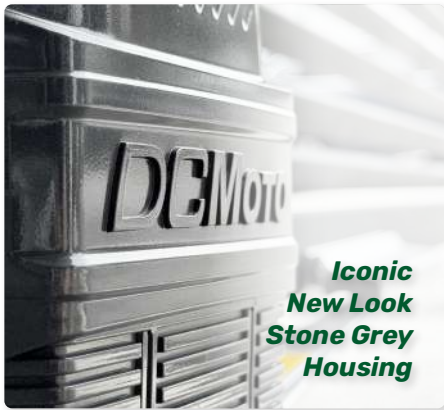
With safe beams installed, the auto-close timer can be set to 1 or 2 minutes, ensuring the gate closes automatically if accidentally left open.



Intruder Alarm

When safety beams are installed, the intruder alarm can be armed. If an obstacle is detected when armed, the siren will alert users, neighbors, or security.





**Iconic
New Look
Stone Grey
Housing**



**AntiSpy-II
Remote
Control**



**Solar Powering System
Compatible**



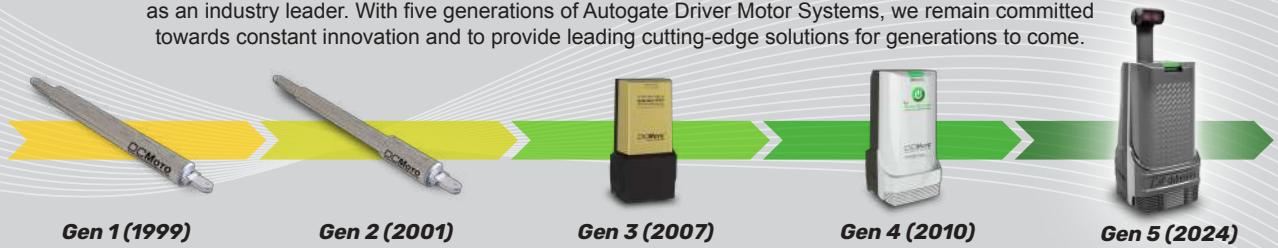
**All New
Weatherproof
Power Box**



SoftGlide™ Motion

DCMoto® Generation Timeline

Since 1990, our passionate commitment towards Autogate engineering excellence has solidified our brand as an industry leader. With five generations of Autogate Driver Motor Systems, we remain committed towards constant innovation and to provide leading cutting-edge solutions for generations to come.



Gen 1 (1999)

Gen 2 (2001)

Gen 3 (2007)

Gen 4 (2010)

Gen 5 (2024)

DCMoto® Innovative Rotary Driving Method

We transitioned from the Jack Screw Method to the Rotary Driving Method to achieve over a 350% increase in efficiency.

Previous Generation
Jack Screw Driver



Planetary Gears Drivetrain
Robust Mono Block
Die Cast Body

**350%
More Efficient!
Compared to
Jack Screw Driver**



Mobile App Remote Control*

Control DCMoto's autogate with the "Digicraft Home" app. The IoT Hub v2 connects to home WiFi, ideal for large families or multiple properties.



*Product Sold Separately



Contact Us